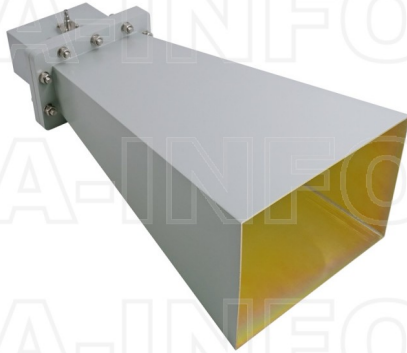


LB-510-10-C-SF Standard Gain Horn Antenna 1.45-2.2GHz 10dB Gain SMA Female

Standard Gain Horn Antenna Operating From 1.45GHz to 2.2GHz With a Nominal 10dB Gain With SMA Female Connector



Product Information

| | |
|-----|----------------|
| SKU | LB-510-10-C-SF |
|-----|----------------|

Description

Standard Gain Horn Antenna LB-510-10-C-SF, operating from 1.45 to 2.2GHz with a nominal 10dB gain and low VSWR 1.25:1 with SMA Female connector output. The model LB-510-10-C-SF has uniform gain through its frequency span, providing efficient performance characteristics and directionality. It can handle 50W continuously and 3000W peak power. Constructed of lightweight corrosion-resistant aluminum, the antenna will provide years of trouble-free indoor and outdoor service. This standard gain horn antenna is linearly polarized and ideally suited for EMI testing, direction finding, surveillance, antenna gain and pattern measurements and other applications.

Technical Specification

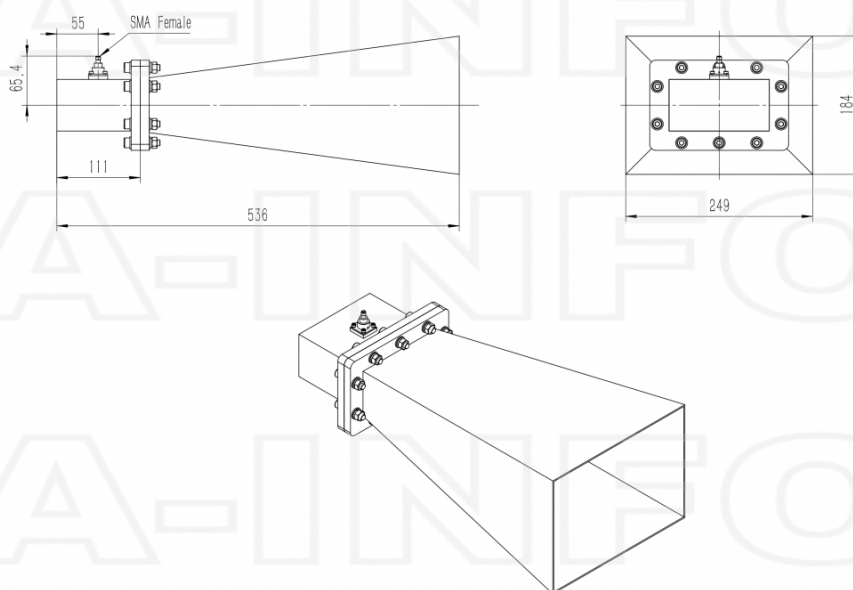
| Electrical Specification | | Interface | |
|------------------------------------|-------------|--------------------------|---|
| Frequency, Min (GHz) | 1.45 | Output Type | Coaxial |
| Frequency, Max (GHz) | 2.2 | Connector | SMA |
| Waveguide Type | Rectangular | Connector Gender | Female |
| Waveguide Size EIA WR | WR510 | Mechanical Specification | |
| Gain, Typ (dBi) | 10 | Figure | C Type |
| Polarization | Linear | Body Material | Al |
| 3dB Beamwidth, E-Plane, Typ (Deg.) | 45 | Finish | Chemical Conversion Coating, Gray Paint |
| 3dB Beamwidth, H-Plane, Typ (Deg.) | 43 | Size, W (mm) | 249 |
| Cross Pol. Isolation, Typ (dB) | 35 | Size, H (mm) | 184 |
| VSWR, Typ | 1.25:1 | Size, L (mm) | 536 |
| Impedance, (Ohm) | 50 | Weight, (kg) | 3 |
| Power Handling, CW, (W) | 50 | | |
| Power Handling, Peak, (W) | 3000 | | |

Additional Information

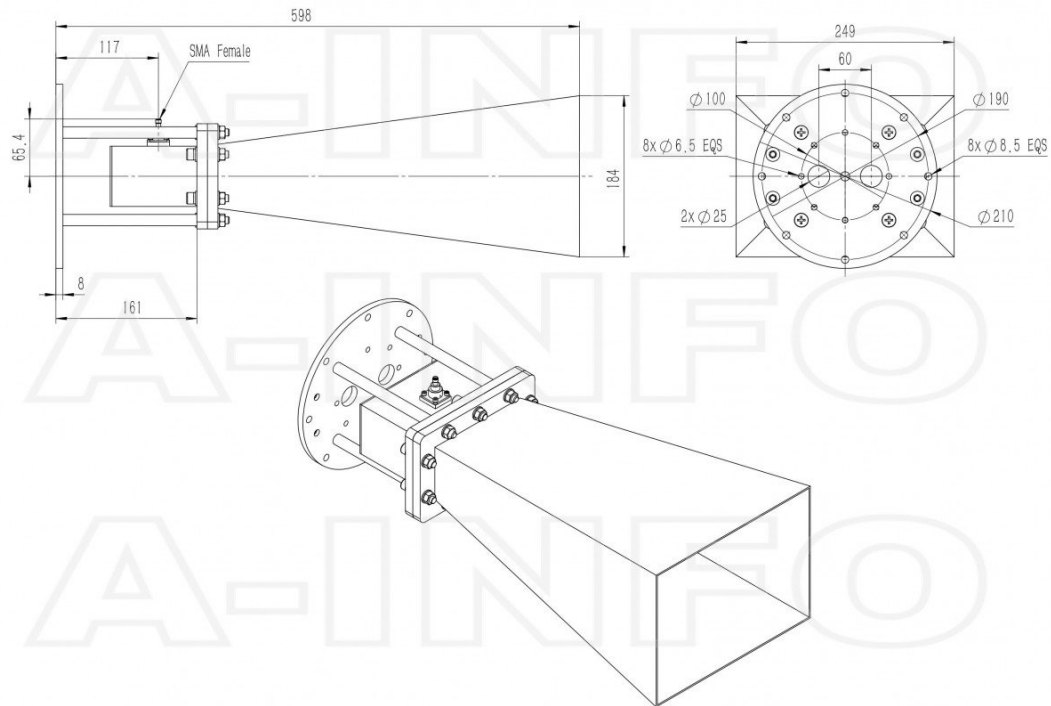
| | | | |
|-------------|---|--------------|---|
| Application | General Purpose Indoor & Outdoor, Fixed | Solution for | Gain Reference Antenna Measurement Reflector Feed Far-field Measurement System Intergration Material Measurement |
|-------------|---|--------------|---|

Outline Drawing

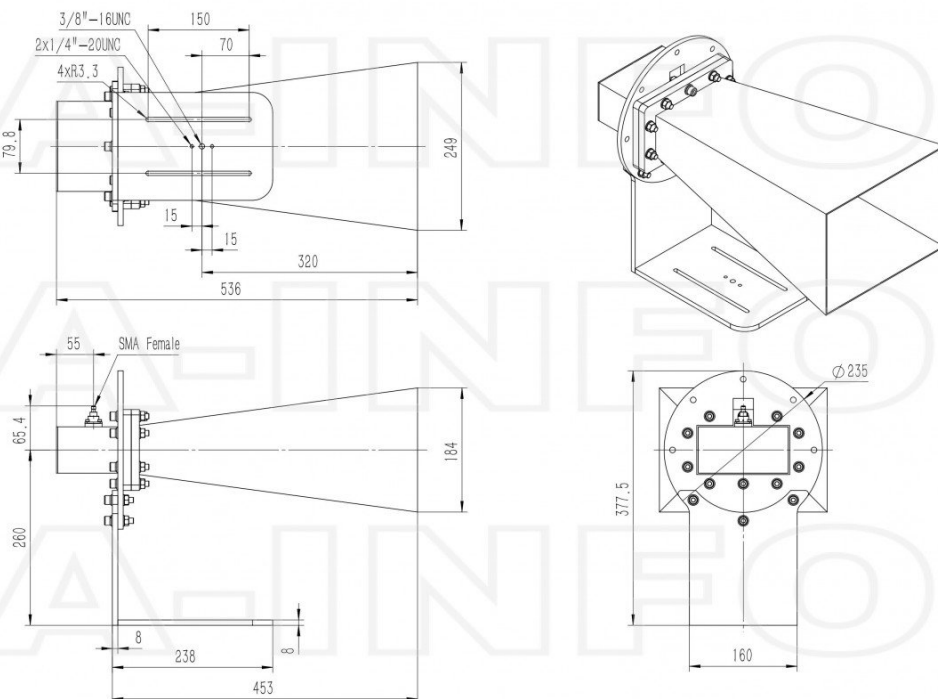
SMA Female Output (P/N: LB-510-10-C-SF)



SMA Female Output with Round Mounting Bracket (Option, P/N: LB-510-10-C-MB)

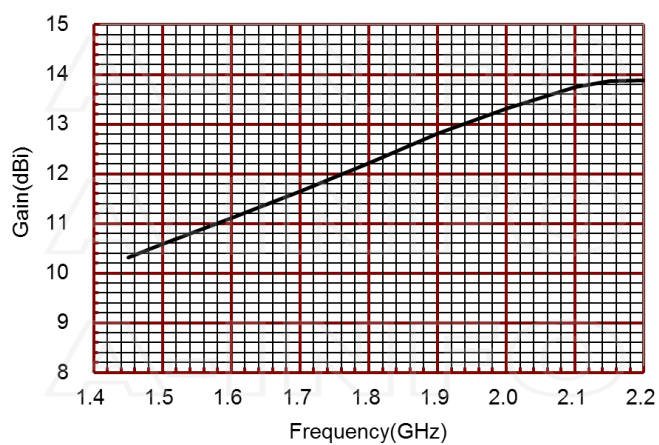


SMA Female Output with L Type Mounting Bracket (Option, P/N: LB-510-10-C-L)

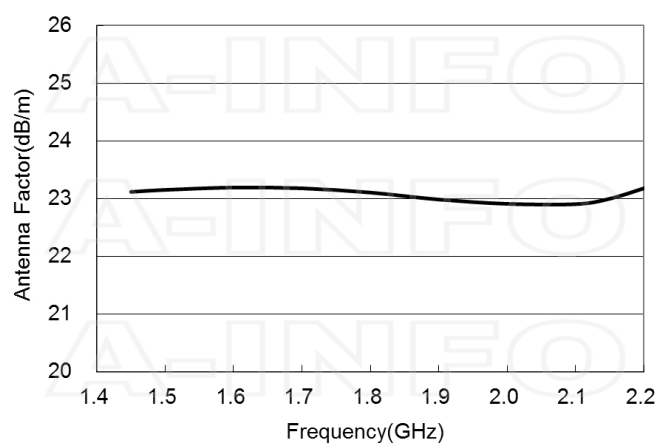


Typical Test Results

Gain



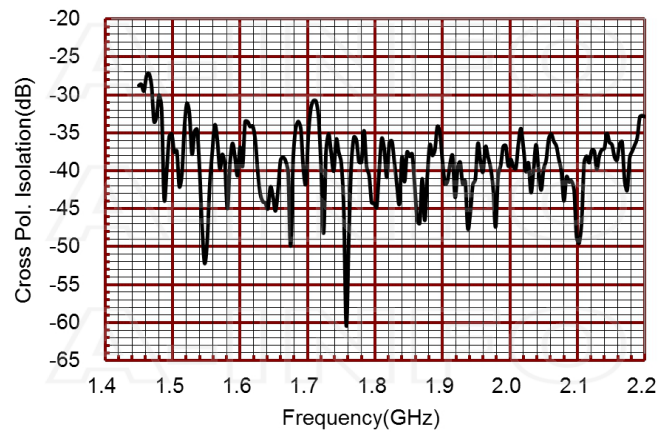
Antenna Factor



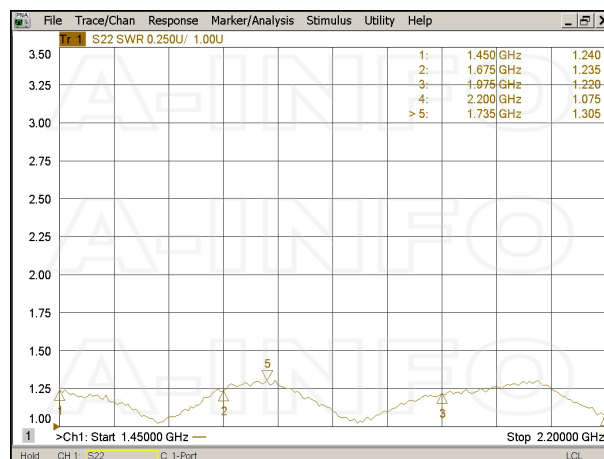
Antenna Factor (Table)

| Frequency(GHz) | Gain(dBi) | Antenna Factor(dB/m) |
|----------------|-----------|----------------------|
| 1.45 | 10.32 | 23.12 |
| 1.50 | 10.58 | 23.15 |
| 1.60 | 11.10 | 23.19 |
| 1.70 | 11.64 | 23.18 |
| 1.80 | 12.21 | 23.11 |
| 1.90 | 12.80 | 22.99 |
| 2.00 | 13.32 | 22.91 |
| 2.10 | 13.75 | 22.90 |
| 2.15 | 13.86 | 23.00 |
| 2.20 | 13.88 | 23.18 |

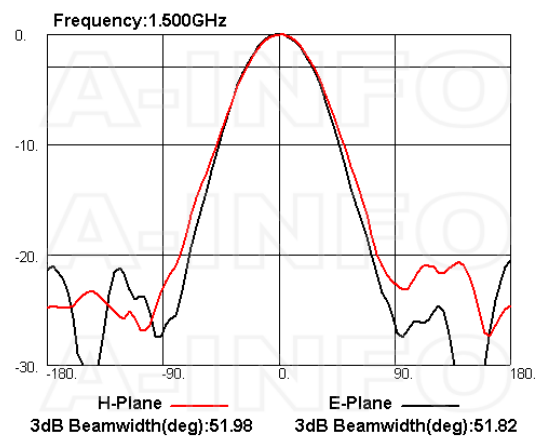
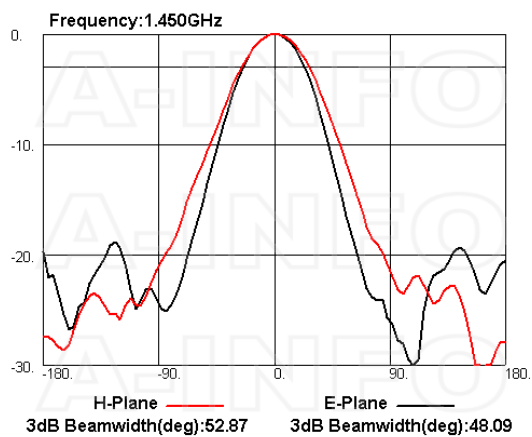
Cross Polarization Isolation

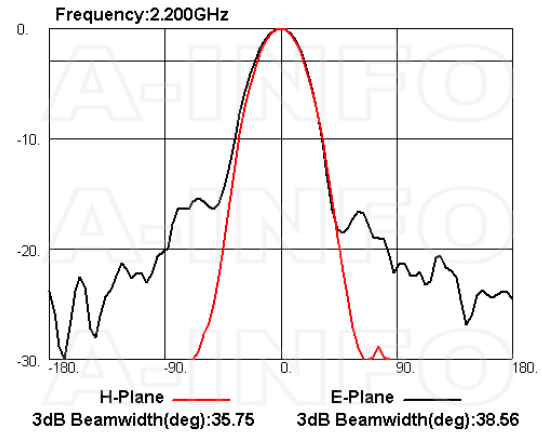
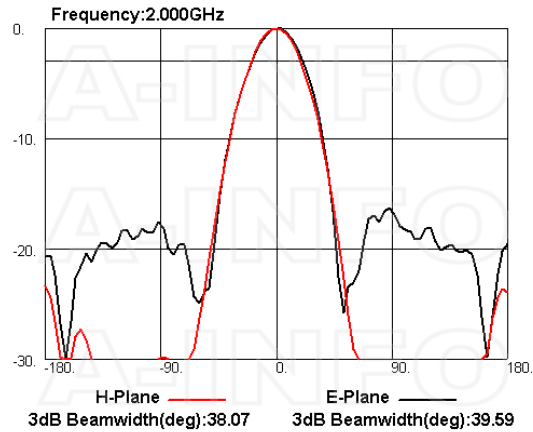


VSWR



Pattern





Related Products



LB-510-10-C-MB Round Type Mounting Bracket



Carrying Case_LB-510-10-C Al Alloy Carrying Case



LB-510-10-C-L L type mounting bracket



M8x40 Hex_Pack WR510-WR650 Flange Assembly Pack



SM-SM-A050-1000 Flexible Cable Assembly 1000mm DC- 26.5GHz SMA Male to SMA Male



SM-SM-A050-1500 Flexible Cable Assembly 1500mm DC- 26.5GHz SMA Male to SMA Male



SM-SM-A050-2000 Flexible Cable Assembly 2000mm DC- 26.5GHz SMA Male to SMA Male



SM-SM-A050-3000 Flexible Cable Assembly 3000mm DC- 26.5GHz SMA Male to SMA Male



SM-SM-A050-5000 Flexible Cable Assembly 5000mm DC- 26.5GHz SMA Male to SMA Male



SM-SM-A050-10000 Flexible Cable Assembly 10000mm DC- 26.5GHz SMA Male to SMA Male



SM-SM-A080-200 Flexible Cable Assembly 200mm DC- 26.5GHz SMA Male to SMA Male



SM-SM-A080-300 Flexible Cable Assembly 300mm DC- 26.5GHz SMA Male to SMA Male



SM-SM-A080-500 Flexible Cable
Assembly 500mm DC- 26.5GHz
SMA Male to SMA Male



SM-SM-A080-1000 Flexible Cable
Assembly 1000mm DC- 26.5GHz
SMA Male to SMA Male



SM-SM-A080-1500 Flexible Cable
Assembly 1500mm DC- 26.5GHz
SMA Male to SMA Male



SM-SM-A080-2000 Flexible Cable
Assembly 2000mm DC- 26.5GHz
SMA Male to SMA Male



SM-SM-A080-3000 Flexible Cable
Assembly 3000mm DC- 26.5GHz
SMA Male to SMA Male



SM-SM-A080-5000 Flexible Cable
Assembly 5000mm DC- 26.5GHz
SMA Male to SMA Male



SM-SM-A080-10000 Flexible
Cable Assembly 10000mm DC-
26.5GHz SMA Male to SMA Male



SM-SM-A080-20000 Flexible
Cable Assembly 20000mm DC-
26.5GHz SMA Male to SMA Male



SM-SM-A100-100 Flexible Cable
Assembly 100mm DC- 18GHz
SMA Male to SMA Male



SM-SM-A100-200 Flexible Cable
Assembly 200mm DC- 18GHz
SMA Male to SMA Male



SM-SM-A100-300 Flexible Cable
Assembly 300mm DC- 18GHz
SMA Male to SMA Male



SM-SM-A100-500 Flexible Cable
Assembly 500mm DC- 18GHz
SMA Male to SMA Male



SM-SM-A100-1000 Flexible Cable
Assembly 1000mm DC- 18GHz
SMA Male to SMA Male



SM-SM-A100-1500 Flexible Cable
Assembly 1500mm DC- 18GHz
SMA Male to SMA Male



SM-SM-A100-2000 Flexible Cable
Assembly 2000mm DC- 18GHz
SMA Male to SMA Male



SM-SM-A100-3000 Flexible Cable
Assembly 3000mm DC- 18GHz
SMA Male to SMA Male

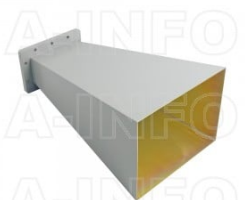


SM-SM-A100-5000 Flexible Cable
Assembly 5000mm DC- 18GHz
SMA Male to SMA Male

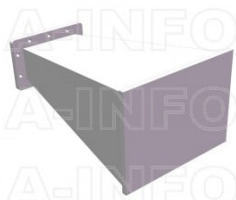


SM-SM-A100-10000 Flexible
Cable Assembly 10000mm DC-
18GHz SMA Male to SMA Male

Similar Products



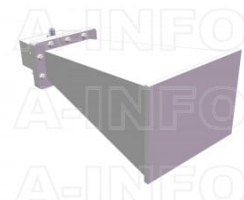
LB-510-10-A Standard Gain Horn
Antenna 1.45-2.2GHz 10dB Gain
Rectangular Waveguide Interface



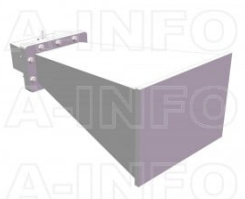
LB-510-10-ASPO Standard Gain
Horn Antenna 1.45-2.2GHz 10dB
Gain Rectangular Waveguide
Interface



LB-510-10-C-NF Standard Gain
Horn Antenna 1.45-2.2GHz 10dB
Gain N Type Female



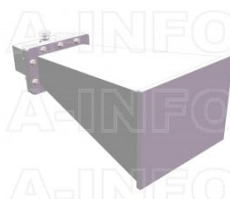
LB-510-10-C-NFSPO Standard
Gain Horn Antenna 1.45-2.2GHz
10dB Gain N Type Female



LB-510-10-C-SFSPO Standard
Gain Horn Antenna 1.45-2.2GHz
10dB Gain SMA Female



LB-510-10-C-7/16F Standard
Gain Horn Antenna 1.45-2.2GHz
10dB Gain 7/16(DIN) Female



LB-510-10-C-7/16FSPO Standard
Gain Horn Antenna 1.45-2.2GHz
10dB Gain 7/16(DIN) Female

About this Datasheet

| | | |
|--|--|--|
| <ul style="list-style-type: none"> Product Information <p>Product Link: https://www.ainfoinc.com/lb-510-10-c-sf-standard-gain-horn-antenna-1-45-2-2-ghz-10db-gain-sma-female Data subject to change without notice. © A-INFO INC. 2023. All Rights Reserved</p> | <ul style="list-style-type: none"> Contact Us <p>Address:dd 60 Tesla, Irvine, CA 92618, USA</p> <p>Website: www.ainfoinc.com</p> <p>Email: sales@ainfoinc.com</p> | <ul style="list-style-type: none"> Phone & Fax <p>Phone: +1-949-639-9688 +1-949-639-9608</p> <p>Fax: +1-949-639-9670</p> |
|--|--|--|